

Sub-question 1:
How Often Do Students and Faculty Log onto the DDP?

Data were gathered to address this question from two of the three approaches. Database mining yielded the number of times students and faculty actually logged onto the DDP. A survey question provided data on student and faculty perceptions of the number of times they logged onto the DDP. The interview questions did not ask students or faculty specifics on how often they logged onto the DDP.

Database Mining

Tracking the number of times students logged onto the DDP was one of the original methods for recording DDP use. However, a consistent record of DDP log-on data was not sustained during the early implementation period. Due to the variety of initial quantitative data gathered (See Table 4) and the difficulty in comparing these data, this researcher analyzed past user logs for the number of students who had logged onto the DDP. The data from the user logs were adjusted to remove all test accounts and multiple logins that were determined to be a system error (log-on times with one second difference). A summary of this data can be found in Table 15. This table extends the data gathered by ERE in Table 12 and affords the opportunity for data comparison between semesters and years. The data in Table 15 verifies that the number of students who logged onto the DDP increased each semester. Although the total number of student log-ons increased, the mean log-on decreased slightly from spring, 2003 (8.9) to fall, 2003 (8.6).

Table 15

Number and Frequency of Students Logging onto the DDP From August 2000 to Fall 2003

	Aug. 2000	Fall 2000	Spring 2001	Fall 2001	Spring 2002	Fall 2002	Spring 2003	Fall 2003
	10/1999 8/2000	8/2000 1/2001	1/2001 8/2001	8/2001 1/2002	1/2002 8/2002	8/2002 1/2003	1/2003 8/2003	8/2003 1/2004
# Students logging on	726	506	519	900	957	1,240	1,396	1,528
Total # Logins	2,811	2,472	3,677	4,902	6,655	8,815	12,457	13,141
Mean	3.9	4.9	7.1	5.5	7.0	7.1	8.9	8.6
SD	5.2	5.8	8.2	5.0	9.6	8.2	11.0	11.2
Min/Max	1-74	1-59	1-76	1-34	1-134	1-98	1-139	1-242
Range	73	58	75	33	133	97	138	241

Figure 11 displays the number of times students logged onto the DDP for the spring, 2005 semester. Students logged onto the DDP a total of 17,303 times, representing 1,893 different students. The mean number of log-ons was 9.1, with a standard deviation of 10.1. The range of log-ons was large, from 1 to 117. Over 75% of students logged onto the DDP 12 times or less. The data from spring, 2005 indicated an increase of the mean log-on, from 8.6 in fall, 2003 to 9.1 in spring, 2005. Institutional data from spring, 2005 lists 1,855 undergraduate degree students and 151 non-degree students for a total of 2,006 students. Due to missing data on student programs stored in the DDP (166 records were missing these data), it is somewhat difficult to compare the number of students logging onto the DDP with institutional data.

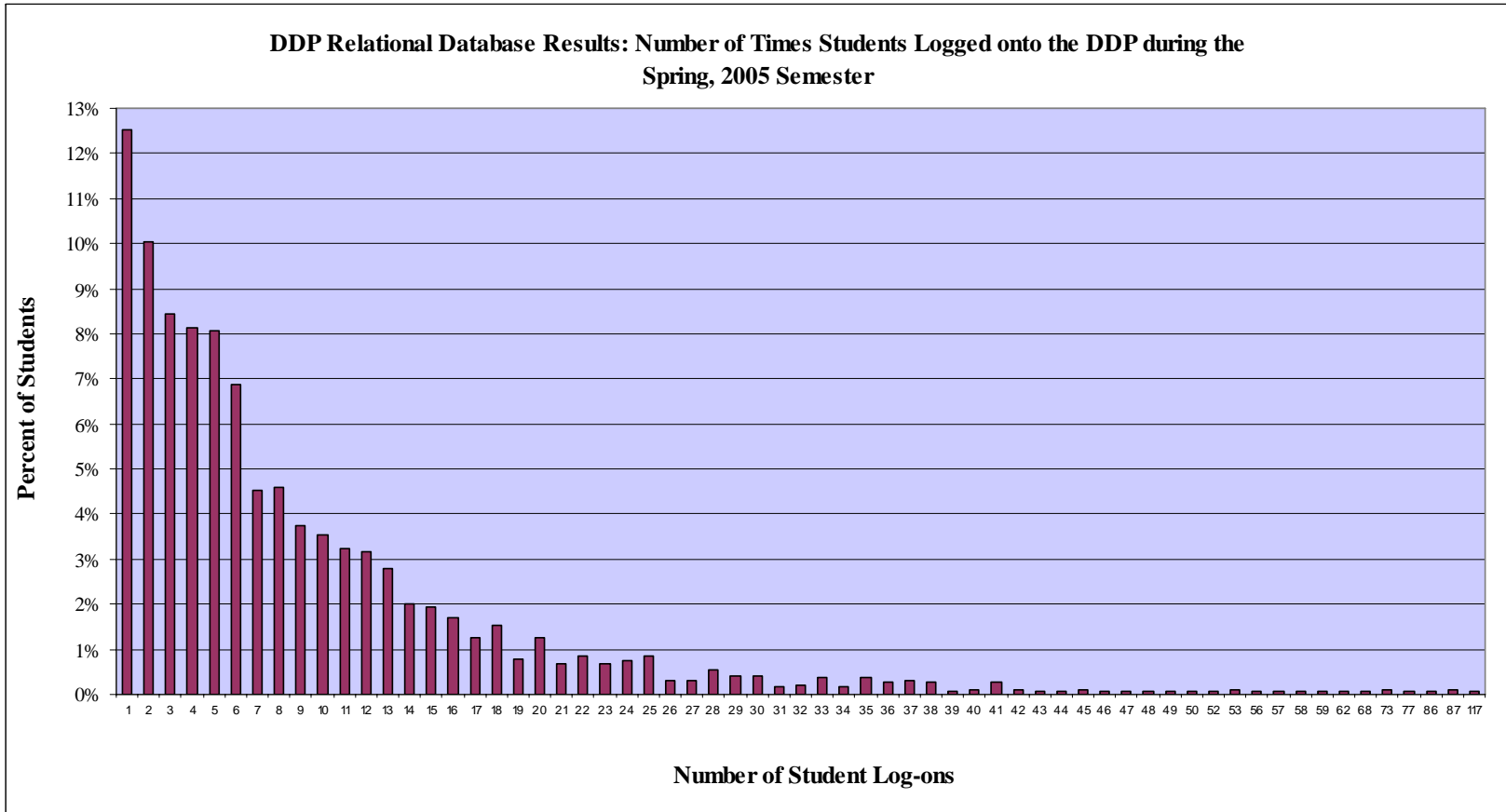


Figure 11. DDP relational database results: Number of times students logged onto the DDP during spring, 2005

The initial research on the DDP did not include tracking faculty log-ons. Spring, 2005 was the first time data on faculty log-ons were gathered. Faculty log-on data were edited to remove all test and generic accounts. Generic accounts were created for multiple users. Generic accounts include Assessment Center, Ability Departments, Faculty Teams, and External Assessors. In addition, log-on data from the DDP Assistant, Academic Computing, and ERE were removed. It should be noted that faculty log-on data could have included faculty who teach in the Masters Programs.

Figure 12 displays the results of faculty log-ons. Data from faculty log-ons have a large range (1–157), with a mean of 22.0 and a standard deviation of 27.7. Due to the large range of data, the median of 10.0 was a more accurate representation of the frequency of faculty log-ons. Faculty logged on to the DDP a total of 3,961 times, representing 180 different faculty. During the spring, 2005 semester the institution lists a total of 252 faculty. These data indicated that 71.4% of faculty logged onto the DDP during the spring, 2005 semester.

The data from the DDP relational database indicated that students who logged onto the DDP generally logged on six times during the spring, 2005 semester. Data from the DDP database indicated that faculty who logged onto the DDP during the spring, 2005 semester generally log on ten times during the semester.

Survey Data Analysis

Surveys completed by students and faculty contained questions on their perception of the number of times they logged into the DDP each month. A standard of one month, rather than a semester, was chosen due to the variety of times during the

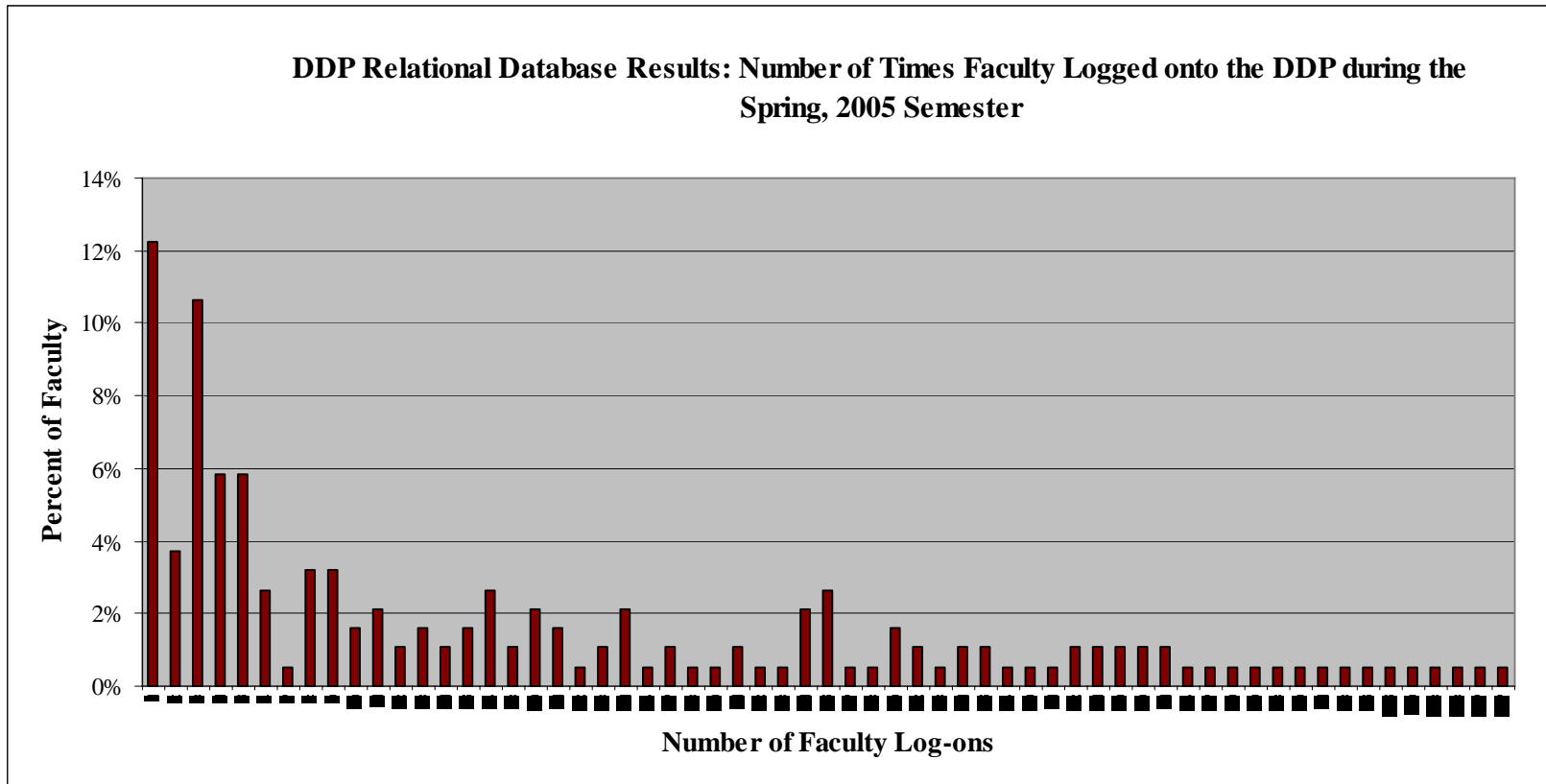


Figure 12: DDP relational database results: Number of times faculty logged onto the DDP during spring, 2005

semester the surveys were completed. Because this was an open-ended question, participants sometimes entered a range of log-ons and in those cases an averaged was recorded. For example, if a survey participant entering *1 to 2* as the number of times they log onto the DDP and during a typical month, a data entry of 1.5 was made.

Student Survey Results

Students were asked the number of times in a typical month they log onto the DDP. A total of 318 students answered this question. Figure 13 displays the results of this question. Approximately 32% of students responded they log onto the DDP *once* per month. It is interesting to note that 17.9% of students responded they log onto the DDP *zero* times in a typical month, while 12.3% of students log onto the DDP four or more times per month.

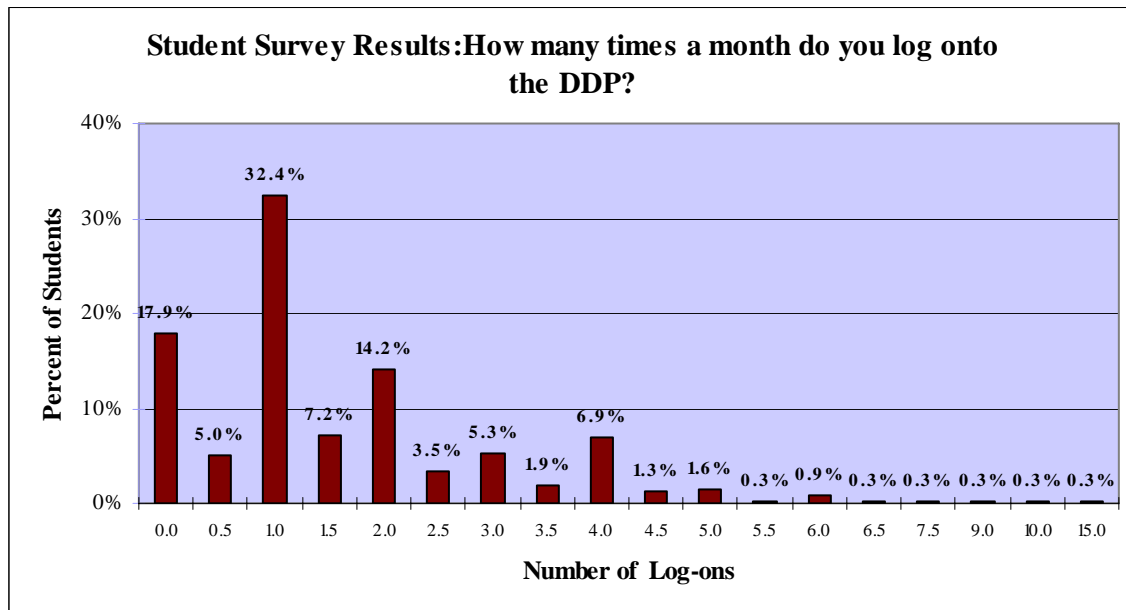


Figure 13. Student survey results: How many times a month do you log onto the DDP?

Table 16 summarizes, by student category (beginning, intermediate, advanced, and all students), the log-on data from the student survey. The mean number of log-ons

per month was 1.7 with a standard deviation of 1.7. The range of log-ons was 0 to 15 and the median was 1.0. Due to the range of data, the median was a more accurate representation of student log-ons per month. The data from advanced students contained an entry for 10 and 15 log-on times per month. The median is slightly higher for beginning students (1.5), while the median for intermediate and advanced students is equal at 1.0. Using the median (1.0), students perceived they logged onto the DDP once per month or approximately four times a semester.

Table 16

Results of Student Survey Question: How many times during a typical month do you log onto the DDP?

Log-ons	Beginning Students	Intermediate Students	Advanced Students	All Students
0.0	27	9	21	57
0.5	8	4	4	16
1.0	47	33	23	103
1.5	17	5	1	23
2.0	28	15	2	45
2.5	7	4	0	11
3.0	10	5	2	17
3.5	3	3	0	6
4.0	16	5	1	22
4.5	1	2	1	4
5.0	2	0	3	5
5.5	1	0	0	1
6.0	1	1	1	3
6.5	0	1	0	1
7.5	1	0	0	1
9.0	1	0	0	1
10.0	0	0	1	1
15.0	0	0	1	1
Total Responses	170	87	61	318
Missing Responses	2	4	0	6
Total Respondents	172	91	61	324
Mean	1.8	1.8	1.5	1.7
Standard Deviation	1.5	1.3	2.6	1.7
Median	1.5	1.0	1.0	1.0

Faculty Survey Results

Faculty were asked the same survey question concerning their perceptions of the number of times they log onto the DDP in a month. Figure 14 displays the data on faculty perceptions of the number of times they logged on in a typical month. The data indicated that approximately 50% of faculty log onto the DDP two times a month or less. The mean was 5.1, with a standard deviation of 6.7. The range was large, from 0 to 35 and the median is 2.0. Due to the large range, the median is a more appropriate representation of faculty perceptions of the number of times they log onto the DDP in a typical month.

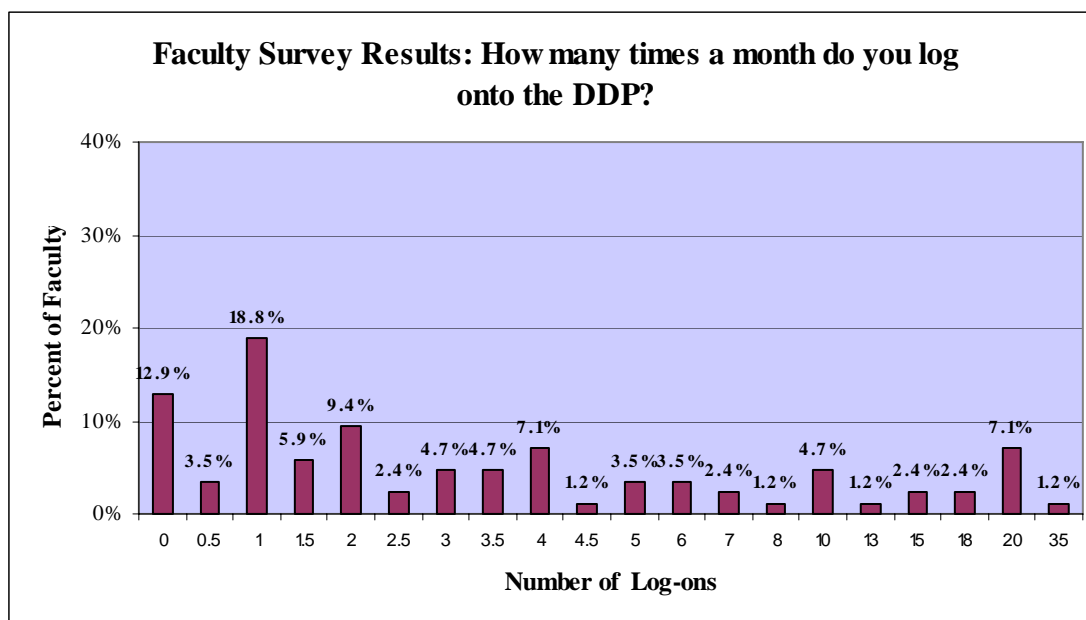


Figure 14. Faculty survey results: How many times a month do you log onto the DDP?

Data from the surveys indicated that students perceived they logged onto the DDP once per month or approximately four times a semester. Surveys indicated that faculty perceived they logged onto the DDP twice per month or approximately eight times a semester.

Summary of Results:

Data from the DDP relational database indicated that 1,893 students logged onto the DDP a total of 17,303 times during spring, 2005 ($M = 9.1$, $SD = 10.1$, Range 1-17, median = 6.0). The median denoted the typical student logged onto to the DDP approximately six times. Survey responses indicated that students perceived that they logged onto the DDP once per month or approximately four times a semester ($M = 1.7$, $SD = 1.7$, median = 1.0).

DDP relational database data found 180 faculty (71.4%) logged onto the DDP 3,961 times ($M = 22.0$, $SD = 27.7$, Range 1-157 median = 10.0) during spring, 2005. The median indicated that faculty logged onto the DDP 10 times during the semester. Survey responses indicated that faculty perceived they logged onto the DDP twice a month or approximately eight times a semester ($M = 5.1$, $SD = 6.7$, Range 0-35, median = 2.0).